

ShockWave PRO



....

The Newest Product



Electromagnetic Shock Wave-ShockWave PRO

The newest shockwave device is more intelligent, the interface is more laconic. It can be used for body pain relief, ED therapy and body slimming.

1. The digital handle can adjust the frequency and energy, record the total number of shots and current temperature.
2. There are 6 different preload to choose.
3. Smart C mode and P mode.
4. 7 treated heads (include 2 special heads for ED treatment)
5. The system will recommend treated heads according to different body parts.
6. Lighter and more refined.

Shockwave Features

- + Faster and more effective therapy session
- + Maximized treatment results
- + Complementary therapies
- + Extremely strong pain relief with long-lasting effect
- + Gentle and comfortable therapy

ShockWave-PRO

7 DIFFERENT HEADS

- 1 new electromagnetic shock wave
- 2 new digital hand piece
- 3 new heads for ED therapy
- 4 new intelligent programming



Technical Parameters

Frequency	1 - 16 Hz
Energy	5 - 200 mj
Power	200 W
Screen	8-inch touch screen
Voltage	AC100V - AC240V
Gross Weight	12 kg
Net Weight	5kg
Treated Heads	7 pcs heads(include 2 special heads for ED therapy)

Shockwave Handle

Increase frequency

Increase energy

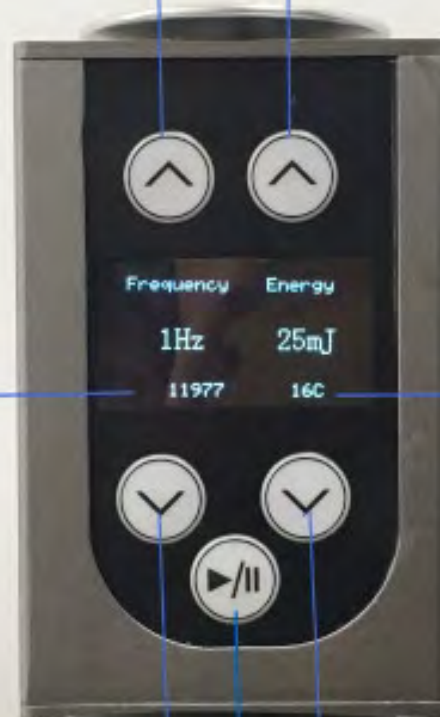
The total number of impacts

The real temperature of handle

Decrease frequency

Decrease energy

Start and stop button



Frequency Energy

1Hz

25mJ

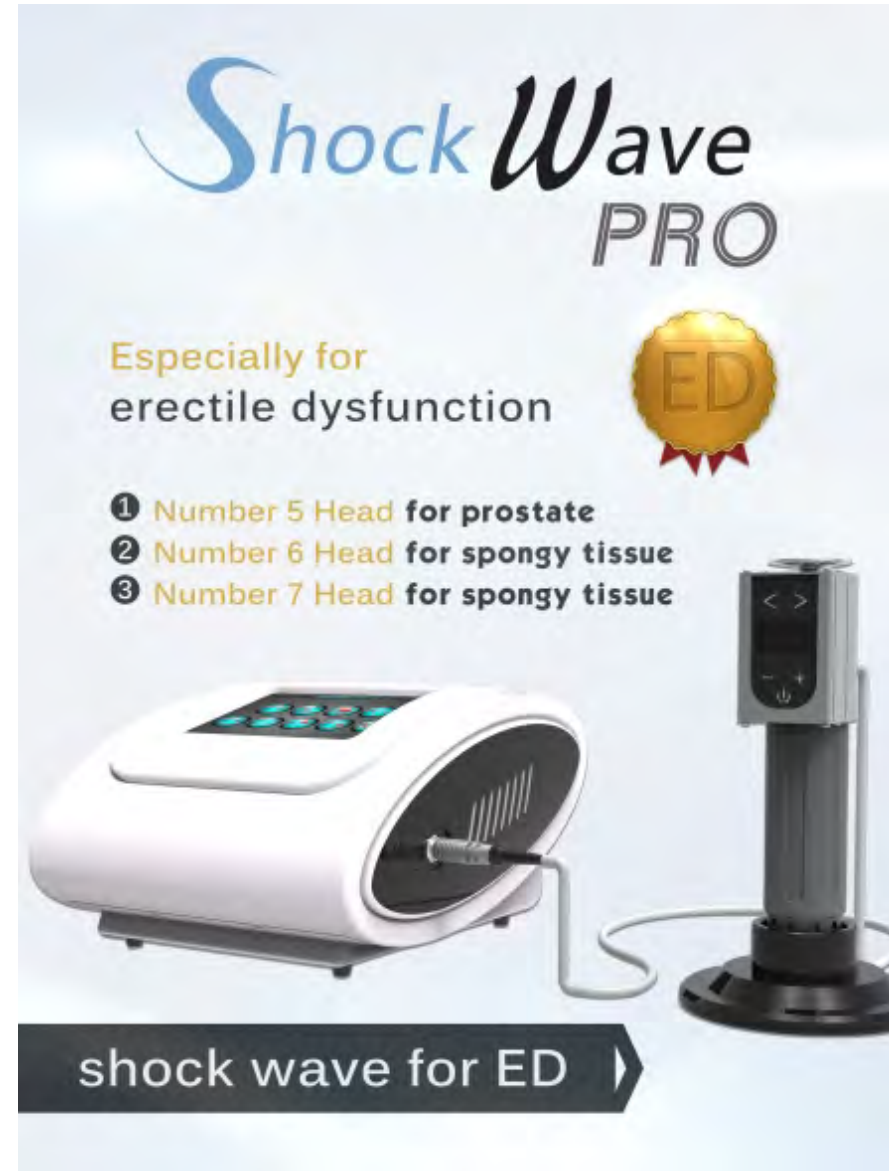
11977

16C

Shockwave for ED Therapy

Most men suffering from erectile dysfunction have vascular problems affecting the vessels that supply blood to the cavernous bodies of the penis, resulting in a decreased ability to develop and maintain an erection. The end result is an inadequate blood-flow followed by premature draining of an already reduced amount of blood from the cavernous bodies, meaning an erection is not achieved.

Shockwave Therapy for ED of this type can be a highly effective treatment.



Shock Wave
PRO

Especially for
erectile dysfunction

ED

- 1 **Number 5 Head** for prostate
- 2 **Number 6 Head** for spongy tissue
- 3 **Number 7 Head** for spongy tissue

shock wave for ED

The Interface of ED Therapy

The system recommend suitable tips automatically

Tips Set

6# 7#

Preload

300 600 1000 1600 2000 2500

6 different preload

Impact 0

Round 0 Times

Frequency 0 Hz

Energy 0 mj

C mode Start

Hand/Wrist Shoulder

Elbow Lumbar Region

Pubic Symphysis Hip

Knee Fat accumulate

Foot/Ankle ED

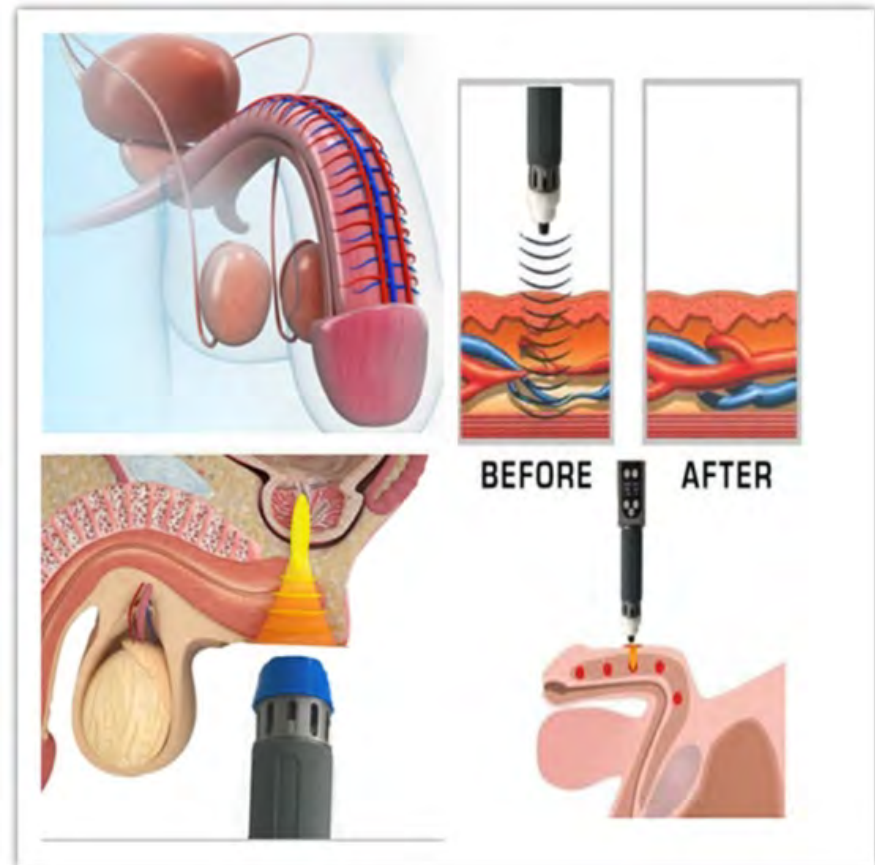
C mode and P mode

BASIC SETTING Working Time 00:00 ADVANCED SETTING

The interface is a dark-themed control panel for an ED therapy device. It features a central human body diagram with a red highlight on the pelvic region. Surrounding the diagram are buttons for selecting body parts: Hand/Wrist, Shoulder, Elbow, Lumbar Region, Pubic Symphysis, Hip, Knee, Fat accumulate, and Foot/Ankle. A large 'ED' button is positioned at the bottom right of the diagram. On the left side, there is a 'Tips Set' section with two tip icons labeled '6#' and '7#'. Below this is a 'Preload' section with six buttons labeled '300', '600', '1000', '1600', '2000', and '2500'. Further down are controls for 'Impact' (0), 'Round' (0 Times), 'Frequency' (0 Hz), and 'Energy' (0 mj). At the bottom left of the main panel are 'C mode' and 'Start' buttons. The bottom of the interface has a dark grey bar with 'BASIC SETTING' (with a wrench icon), a 'Working Time' display showing '00:00', and 'ADVANCED SETTING' (with a gear icon).

ED Therapy Protocol

1. Target to spongy tissue in 5 different areas.
2. 300 impacts per area, total 1500 impacts in one treatment.
3. Twice a week , treat consistently for 3 weeks, then stop for 3 weeks. And start next course .
4. Should be more impacts at the top end of penis and less impacts at the bottom of penis.



Shockwave for Physiotherapy

Shockwave is an acoustic wave which carries high energy to painful areas and soft tissues with subacute, subchronic and chronic conditions. This energy promotes healing, regenerating and reparative processes. It's a unique, non-invasive solution for pain associated with the musculoskeletal system. Just three to four treatments needed at weekly intervals. A therapy session only takes approximately 10 minutes.



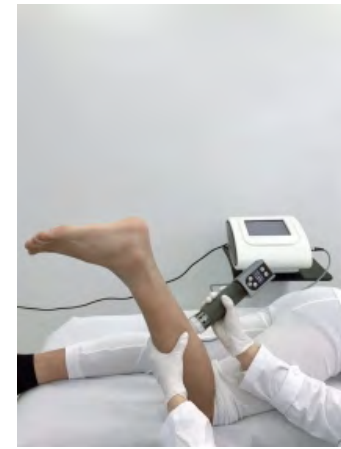
Partial Treated Area



Shoulder



Knee



Leg



Belly



Back

Shockwave for Cellulite Reduction

ESWT is a safe, non-invasive, FDA-approved form of treatment for the reduction of cellulite and other improved body benefits. Various parts of the body can be treated effectively.



The principle of shock wave fat reduction

As fat cells grow larger, they get trapped under the skin, causing the surface of the skin to bulge. This leads to the tell-tale dimpling appearance. Blood flow is restricted by the unhealthy fat cells.

Acoustic Wave Therapy has been found to be the first non-invasive treatment method to ensure effective and long-lasting treatment of age-related connective tissue weakness, especially in the treatment of cellulite. Acoustic waves stimulate microcirculation in connective tissue and fat cells and improve existing metabolic regulation disorders to reduce the visible signs of cellulite.

